



Coatings & Polymers Laboratory

26 mm twin-screw extruder

Our lab is your lab

Our Coatings and Polymers Laboratory is a fine example of the Covia culture of innovation. Our lab is your lab to develop a richer knowledge base about how our minerals interact with the polymers you use.

What does this mean for you? The lessons learned here, based on comprehensive R&D, are contributing to a greater understanding of how minerals and polymers can be applied in range of plastic products to increase their utility and value.

This R&D expertise, supported by a broad product platform, offers outstanding opportunities to leverage innovation across markets.

Lean on our polymer experts to:

- Investigate how Covia's functional fillers perform in various polymer systems vs. competitors' minerals.
- Assist with product testing to ensure a seamless transition from our lab to your customers.
- Perform various testing to develop tailored solutions to meet your needs.

Expanding polymer value for you

26 MM TWIN-SCREW EXTRUDER

This extruder compounds our functional fillers into various polymers for further testing.



UV WEATHERING TEST CHAMBER

Tests a polymer's aging, color, and service life in an accelerated time frame.



Our lab is your lab

TORQUE RHEOMETER

Torque rheometer with multiple attachments allows us to investigate filler interactions in different polymer systems.



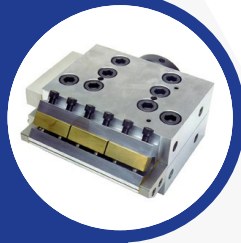
3/4", 25:1 L/D SINGLE-SCREW EXTRUDER

Allows small-scale film production for inspection and quality control.



4" FLEX LIP DIE

Offers a uniform film thickness of the cross-sectional area, eliminating torn edges and uneven sheet film or ribbon-film samples.



3 ROLL CHILL-ROLL HAUL-OFF UNIT

Continuously draws extruded sheet, ribbon, or tape material from an extrusion process in a defined manner.



3 PIECE MIXING BOWL

Examines melt characteristics of polymers.



CONICAL TWIN-SCREW EXTRUDER

Processes shear-sensitive materials, such as PVC.



BLOW-FILM TOWER

Ensures the continuous take-up of blown film samples.



CONVEYER-BELT HAUL-OFF SYSTEM

Enables a smooth and deformation-free transport of test and processed polymers



HIGH-INTENSITY MIXER

Mixes powder blends.



TENSILE TESTING

Evaluates the tensile strength of plastic parts and sheets.



MELT INDEXER

Measures how easy a polymer flows when melted.



For more information on how we can elevate your polymer R&D to increase product utility and value, please call: 800.243.9004 or email: Polymers@coviacorp.com.



CoviaCorp.com